

PERSONAL NAVIGATOR



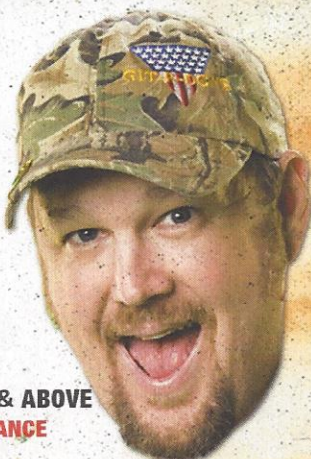
Sunrise: 6:18 a.m. Sunset: 6:39 p.m.
 Evening Attire: Cruise Casual
 First Tender: Approx. 10:30 a.m.
 Please refer to your Tendering Letter.
 Last Tender: 4:00 p.m.
 Monday: Sunny High: 75°F/24°C
 Tuesday: Sunny High: 80°F/27°C

MONDAY, APRIL 2, 2012

GRAND CAYMAN

WALT DISNEY THEATRE

LARRY THE CABLE GUY



DECKS 3 & 4, FORWARD
 6:15 P.M. & 8:30 P.M.

SHOW RECOMMENDED FOR GUESTS 13 YEARS OF AGE & ABOVE
 NO VIDEO OR PHOTOGRAPHY DURING THE PERFORMANCE

LAUGHTER ROCKS THE SHIP!

Grand Cayman Port Information

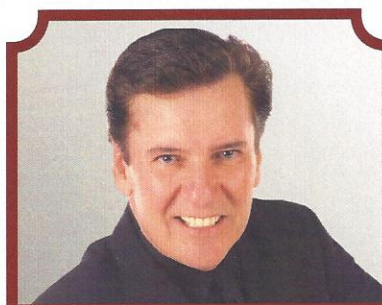
The Cayman Islands were first sighted by European explorers in 1503, in a wayward voyage headed by Christopher Columbus. Though the 2 smaller islands were discovered on this fateful trip, the largest of them, Grand Cayman, would escape attention by sailors until 1655, when the area was claimed by the British. For centuries from the time of their discovery, the Cayman islands would provide a place for ships to come ashore and rest on their journeys into the Caribbean. Crewman on these ships would routinely replenish themselves on the meat provided by the native population of turtles.

By the 19th century, Grand Cayman was overtaken by pirates. It would take political upheaval and the establishment of a local government under British rule to transform the island into what it is today.

Discover a place that—once a welcome refuge for buccaneers—is today a treasured tourist hotspot. From sparkling surf to the bounty of local shops, whatever your pleasure, you'll find it here.

DOCKING - Please refer to Tender Letter

The ship anchors outside of the port and Guests take a tender to the dock. Tenders are small boats that provide transportation between the ship and the shore. Guests with special needs/disabilities wishing to leave the ship should check with Guest Services for accessible gangways.



FAMILY CABARET

Featuring the
 Comedy and Music of
 Paul Boland
 as he entertains the entire
 family in this cabaret style
 show.

7:30 pm
 The Tube, Deck 4, Aft

Don't Miss:

Disney Animation - Illusion of Life: Cartoon Physics
 3:00 p.m., D Lounge, Deck 4, Midship
 Go behind the scenes at Walt Disney Animation Studios and see how flat drawings and pencil lines can come to life through basic techniques such as Stretch and Squash, and create your own "bouncing ball" animation exercise in this entertaining and fun enrichment program.

Disney Channel On Deck
 4:00 p.m., Deck Stage, Deck 11, Midship
 Don't change that channel! It's time for the Disney Channel Afternoon Pool Party! Your Cruise Staff will host an exciting deck party full of games, and contests, all in between your favorite Disney Channel shows! So sit back, relax and enjoy the sun!

Mega Raffle Jackpot Bingo
 7:15 p.m., D Lounge, Deck 4, Midship
 Card Pre Sales start at 7:15 p.m. First game starts at 7:30 p.m. Join your Cruise Staff for family Bingo fun! Four cash prize games. Plus, great raffle prize packs to be won.

Partner Playoff
 7:30 p.m., O'Gills Pub (18+), Deck 4, Aft
 Start out by competing against your partner and then finish by teaming up with them to beat those other guys!



IMPORTANT INFORMATION

Please check your tour tickets for meeting times and locations.
 Visit the Port Adventures Desk, Deck 5, Midship for any questions.

DINNER MENU

Animator's Palate: Pacific Rim Cuisine
 Enchanted Garden: Continental Market
 Royal Court: French Dinner

DRINK OF THE DAY

Yellow Bird (Alcoholic)
 Lava Smoothie (Non Alcoholic)

IMPORTANT NUMBERS

Fire/Security: 7-3001
 Medical Emergency: 7-3000
 Health Center: 7-1923

FAMILY ACTIVITY HIGHLIGHTS

PORT AND SHOPPING HIGHLIGHTS SHOW - GRAND CAYMAN

D Lounge, Deck 4, Midship - 9:30 a.m.

Join Johan and Marissa, your Port and Shopping guides for last minute shopping tips on Grand Cayman.



CHIP IT GOLF

Lobby Atrium (12+), Deck 3, Midship - 2:00 p.m.

It's par for the course for our Guests 12 and older to compete on our special "greens" in this fun tournament.

DISNEY ANIMATION - ILLUSION OF LIFE: CARTOON PHYSICS

D Lounge, Deck 4, Midship - 3:00 p.m.

Go behind the scenes at Walt Disney Animation Studios and see how flat drawings and pencil lines can come to life through basic techniques such as Stretch and Squash, and create your own "bouncing ball" animation exercise in this entertaining and fun enrichment program.



DISNEY CHANNEL ON DECK

Deck Stage, Deck 11, Midship - 4:00 p.m.

Don't change that channel! It's time for the Disney Channel Afternoon Pool Party! Your Cruise Staff will host an exciting deck party full of games, and contests, all in between your favorite Disney Channel shows! So sit back, relax and enjoy the sun!

LIVE MUSIC WITH ROB THOMPSON

Deck 12, Forward - 4:00 p.m.

Join Rob Thompson as he plays the Guitar live for your listening pleasure.

NCAA FINALS - KENTUCKY VS. KANSAS

FunnelVision, Deck 11, Midship - 8:15 p.m.

Watch the game on the BIG screen as the NCAA Finals are broadcast live on FunnelVision.

DISNEY KARAOKE

D Lounge, Deck 4, Midship - 6:30, 8:45 & 10:30 p.m.

Join your Cruise Staff in D Lounge tonight and sing along to your favorite Disney song - fun for everyone.



FAMILY FUSION

D Lounge, Deck 4, Midship - 10:00 p.m.

Bring the entire family and test your Disney knowledge in this interactive, family game show.

ADULT ACTIVITY HIGHLIGHTS



SENSES SPA FITNESS CLASSES AND SEMINARS

Sunrise Stretch - Senses Spa Fitness Center, 7:00 a.m.

Fab Abs - Senses Spa Fitness Center 7:30 a.m.

Body Sculpt Boot Camp (Fee Applies) - Senses Spa Fitness Center 8:00 a.m.

Group Cycling - Senses Spa Fitness Center, 9:15 a.m.

PUB QUIZ

O'Gills Pub, Deck 4, Aft - 4:00 p.m.

Join your Club Host, Max, and challenge your fellow cruisers in this fun Pub Quiz!



CLUB 18*21 DIVE INTO DJ'ING

The Tube, Deck 4, Aft, 4:30 p.m.

Join your fellow cruises aged 18 to 21 as DJ Z teaches you how to spin the decks!

PARTNER PLAYOFF

O'Gills Pub, Deck 4, Aft - 7:30 p.m.

Start out by competing against your partner and then finish by teaming up with them to beat those other guys!



VIVA EUROPA

Europa, Deck 4, Aft, 10:00 p.m.

Join us as we give you an entertaining taste of Europe. From Italy, France, to Ireland and London and best of all you won't even have to leave the ship!

ADULT CABARET: BUCKETS N BOARDS

The Tube, Deck 4, Aft - 10:15 p.m.

Featuring the Comedy and Rhythm of Buckets N Boards in this adult exclusive Cabaret style show.



MEGA RAFFLE JACKPOT BINGO

**D Lounge,
Deck 4, Midship**

Card Sales - 7:15 p.m.

Game Starts - 7:30 p.m.

Join your Cruise Staff for family Bingo fun! Four cash prize games. Plus, great raffle prize packs to be won. Don't miss out on the fun!



YOUTH ACTIVITIES HIGHLIGHTS

DINE & PLAY

A convenience for families dining at 8:15 p.m., our Youth Activities Counselors will be available at 9:15 p.m. at the entrance of Royal Court, Enchanted Garden and Animator's Palate dining rooms to bring registered children to join the fun in the Youth Activity areas.



Deck 5 Midship (7-1440) 9:00 a.m. - 12:00 Mid.

ONCE UPON A TIME

3:30 p.m.

Join Beverly the Bookmaker for a magical, musical story time featuring a Disney Princess!

BIG TOP FUN FEST

7:15 p.m.

It's the greatest show on Earth. Come re-discover the circus Disney style with clowns, jugglers and classic Disney cartoons.



Deck 5 Midship (7-1445) 9:00 a.m. - 1:00 a.m.

DETECTIVE SCHOOL

9:30 a.m. & 6:30 p.m.

It's a crime how much fun you'll have as you go CSI Goofy Style.

SUPER SLOPPY SCIENCE - FLUBBER

8:30 p.m.

Join Professor Make-O-Mess in some of the most extreme experiments you will ever see in the world of Super Sloppy Science!



Deck 13 Midship (41-14426) 10:00 a.m. - 1:00 a.m.

ESPN DREAM TEAM DRAFT DAY

1:45 p.m.

Play ball! Join the "Commissioner" and engage in this interactive fantasy baseball draft unlike anything you've ever seen! Can YOU draft the greatest baseball team of All-Time?

ANYONE CAN COOK - CUPCAKES

7:00 p.m.

Anyone can cook as we work together to create some of our favorite treats.



Entrance on Deck 4 Forward (7-9418)
12:00 p.m. - 2:00 a.m.

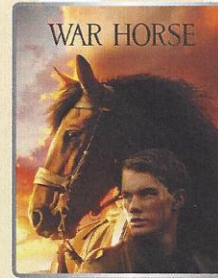
ESPN MONDAY NIGHT FOOTBALL CALL IT!

10:00 p.m.

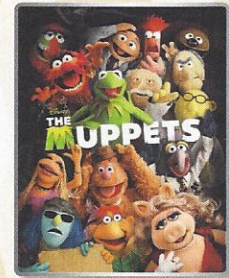
Test your Monday Night Football knowledge as you watch some of the greatest highlights of football history and then "make the call" as to what happens next!

BUENA VISTA THEATRE

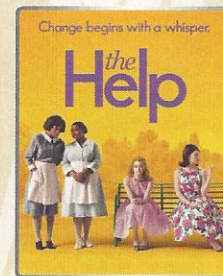
Today's Movies



2:30 p.m.
Run Time: 2 hrs 26 mins
Rating: PG-13



5:45 & 8:15 p.m.
Run Time: 1 hr 43 mins
Rating: PG



10:30 p.m.
Run Time: 2 hrs 26 mins
Rating: PG-13



Bring the entire family and test your Disney knowledge in this interactive, family game show.

10:00 p.m.,
D Lounge,
Deck 4, Midship



Join us as we give you an entertaining taste of Europe. From Italy, France, to Ireland and London and best of all you won't even have to leave the ship!

*Europa (18+),
Deck 4, Aft
10:00 p.m.*

YOUTH ACTIVITIES OPEN HOUSE

Open House is an opportunity for all to come and participate in a variety of exciting activities and free time in the Oceaneer Club, Lab, Edge and Vibe throughout the cruise. During these times secured programming will still be offered in the other venue for those looking to check their children into care.

MORE TO ENJOY WHILE ONBOARD

ONBOARD AIRLINE CHECK IN

If you would like to have your boarding passes printed for you onboard and have your luggage taken to the airport for you, register by 8:00 p.m. on Wednesday April 4th. If you have Disney Cruise Line airport transfer to Orlando International Airport and fly with one of the participating airlines. Please stop at Guest Services Desk, Deck 3, Midship.



DISNEY VACATION CLUB®

Want to learn more about taking magical vacations year after year? Please see a Disney Vacation Club representative on Deck 4, Mid-Ship, or call 7-2805 from your stateroom phone for more information about our interactive group presentation.



GRAND CAYMAN PORT & SHOPPING HIGHLIGHTS

Join Johan and Marissa for last minute shopping tips before heading into Grand Cayman the largest shopping port this cruise! D Lounge, Deck 4, Midship at 9:30 a.m.



SENSES SPA & SALON PROCOLLAGEN SHAVE

Procollagen Grooming Treatment with a Shave is the shave of all shaves, nourishing and nurturing men's skin, ingrown hairs and shaving induced skin irritations.

55 minutes \$95

Call Senses Spa & Salon, 7-1465

TODAY'S SHOPPING SPECIAL

Chopard

Swiss luxury watches and jewelry, designed from artisans showcasing unparalleled glamour and craftsmanship.

Available in Whitecaps, Deck 3, Forward.



Shutters

SEE YOUR PHOTOS!

All your formal portraits taken last night are ready for purchase. Avoid the rush on the last night of the cruise and order your stateroom photos for one low price on a CD for only \$349.95 CD includes the artwork and for \$50 more you can buy the printed copy as well! Terms and conditions apply.

**Please note that photos are available for viewing on our interactive photo kiosks approximately five hours after being taken and are only available for purchase during this cruise.*

SURF @ SEA

\$0.75 per minute, or save money by buying blocks of time. \$55.00 for 100 minutes, \$100.00 for 250 minutes and \$150.00 for 500 minutes. Wireless information sheets are available at Guest Services, Deck 3, Midship. *Please note: Due to satellite connectivity, onboard internet service will be noticeably slower than you may be accustomed to and may at times be interrupted or unavailable.*

ON DEMAND TV

Watch Disney movies, Hollywood features, ABC Shows, and even captioned content, plus much more "On Demand" for FREE in the comfort of your stateroom! Bookmark your movie and come back to watch it later. Press MENU on your stateroom television remote control, and follow the prompts.



BOOK YOUR NEXT CRUISE TODAY AND SAVE

Don't waste time, book your next cruise today. You'll save 10%, receive up to a \$200 onboard credit, and pay a reduced deposit! Tune to Channel 8 on your stateroom TV, visit the Future Cruise Sales Desk, Deck 4 Midship, or call 7-2848.

Disney CRUISE LINE PORT ADVENTURES

Welcome to the beautiful island paradise of Grand Cayman. Today is the perfect day to get out and explore this stunning island. Take this opportunity to discover Grand Cayman's world renowned snorkeling. Dive down deep and explore the ocean floor on the Atlantis submarine or just sit back, relax and enjoy the sights and sounds of this island on the Grand Cayman Island tour. Visit our friendly Port Adventures team located Deck 5, Midship, and let us answer all your questions about Grand Cayman.

SHOPPING

MERCHANDISE PRODUCT LIMIT

All Maiden Voyage, Inaugural and Fantasy Merchandise will have a limit of two per person, per style, per size (where applicable).

LIMITED EDITION MERCHANDISE

RANDOM SELECTION PROCESS

Please check your allotted time for you to collect your merchandise outside Sea Treasures, Deck 3, Forward.

A PIRATES LIFE FOR ME!

The Pirates League - don't forget to book your pirate makeovers for all of the family for tomorrow's pirate night. Bibbidi Boddidi Boutique, Deck 5, Midship.

DISNEY FANTASY INAUGURAL MERCHANDISE

Stop by Sea Treasures and check out our amazing Disney Fantasy Inaugural range. We have something for everyone from tees, sweatshirts, mugs and more!

SOPHIA FIORI DIAMOND TRUNK SHOW UNVEILING OF WHITE DIAMONDS

Looking for something to celebrate a special occasion, or just to treat a loved one? Want to be unique and individual? Hollywood's favorite jewelry designer & diamond industry expert, Bernard Bachoura, is personally unveiling his white diamond collection, designed by himself. Stop by Whitecaps to try on the world's most memorably white diamond pieces and commemorate your cruise. Ask the hosts about 50% savings off US Retail. Whitecaps, Deck 3, Forward at 7:30 p.m.

Due to port regulations, when the ship is docked, the stores will remain closed.

IMPORTANT INFORMATION

Security Notice

All Guests (including children) who wish to disembark the ship are required to present their Key to the World card at the gangway. A photo ID is also required for those Guests who are 18 years of age or older. Guests under the age of 18 are required to have a Parent, Guardian or other responsible adult sign an authorization form at the time it is given out if they wish to go ashore unaccompanied. Authorization forms are available at the gangways and Guest Services.

Cold and Flu Reminder

Please wash hands frequently and thoroughly; particularly before meals. Contact the Health Center by dialing 7-1923, should anyone in your party become ill.

Corridor Quiet Hours

As a courtesy to all our Guests, please recognize quiet hallway hours from 10:00 p.m. til 8:00 a.m.

Inclement Weather

For the safety of all Guests, outdoor events may be changed due to unforeseen weather conditions.

Environmental Message

With Disney's commitment to the Environment, please refrain from throwing anything over the Ship's side. Thank you!

No Reserved Seats Policy

As a courtesy to all our Guests, we kindly advise that the saving of seats is not permitted in the Walt Disney Theatre, and the saving of the sun loungers is not permitted on Deck 11, 12, and 13. Items left unattended will be returned to lost and found at Guest Services, Deck 3 Midship.

Smoking

For the comfort of our guests the following areas are designated as Smoking areas: - Promenade Deck (Deck 4), Smoking is permitted Port Side, Aft only from 6:00 p.m. to 6:00 a.m.

- Currents - Deck 13, Forward, Port Side.

- Meridian Bar - Deck 12, Aft, Port Side, outside.

- Smoking is permitted on stateroom verandahs.

Smoking is prohibited inside all guest staterooms. Guests found smoking in their staterooms will be charged a \$250 stateroom recovery fee.

Walt Disney Theatre

Theatrical performances may use artificial fog, strobe lights, pyrotechnics and other special effects. For the safety of our performers and the comfort of those around you, the use of any photography, video recording device or any electronic equipment is prohibited.

Verandah Safety

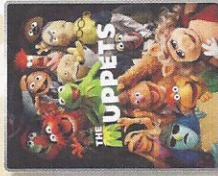
Please do not leave any combustible materials on your balcony when not present in your stateroom for safety reasons.

MONDAY, APRIL 2, 2012 - GRAND CAYMAN

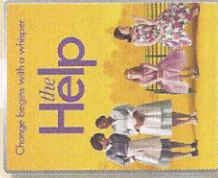
BUENA VISTA THEATRE



2:30 p.m.
Run Time: 2 hrs 26 mins
Rating: PG-13



5:45 & 8:15 p.m.
Run Time: 1 hr 43 mins
Rating: PG



10:30 p.m.
Run Time: 2 hrs 26 mins
Rating: PG-13

Character Appearances

MICKEY MOUSE
Lobby Atrium - 9:30 a.m.

MINNIE MOUSE
Lobby Atrium - 9:45 a.m.

DONALD DUCK
Lobby Atrium - 10:00 a.m.

DAISY DUCK
Lobby Atrium - 10:15 a.m.

CHIP & DALE
Lobby Atrium - 10:30 a.m.

PINOCCHIO
Lobby Atrium - 5:00 p.m.
Preludes - 7:30 p.m.

PHINEAS & FERB
Deck 4, Midship Balcony - 10:00 p.m.

PETER PAN
Deck 4, Midship Balcony - 5:15 p.m.
Lobby Atrium - 7:30 p.m.

SNOW WHITE & DOPEY
Lobby Atrium - 5:30 p.m.
Lobby Atrium - 8:00 p.m.

Deck 4, Midship Balcony - 9:30 p.m.

For details of daily Disney character appearances, refer to the character line on your Personal Grid, or the digital character board in the Lobby Atrium.

YOUTH ACTIVITIES THEMED EXPERIENCES

CLUBHOUSE SERIES
focuses on movement and features content which appeals to younger children.

STORYBOOK SERIES
is designed with a strong connection to the Disney classic stories.

JUMP UP! SERIES
includes large ground games & movement-oriented activities.

CREATE & INVENT SERIES
will have a tactile focus allowing children to create and admire their work.

IN THE SPOTLIGHT SERIES
focuses on children's stage presence with lots of activities and enthusiasm.

SOLVE IT! SERIES
are less active, but will challenge children with problem/solutions-based activities.

OUT & ABOUT SERIES
Set outside secured Youth Activities spaces, very active, appealing to Tweens. Recommended 8 - 14 years

SHIP DIRECTORY

YOUTH ACTIVITIES

DISNEY'S OCEANEER CLUB	DECK 5, MID	9:00 A.M. - 12:00 MID.
DISNEY'S OCEANEER LAB	DECK 5, MID	9:00 A.M. - 1:00 A.M.
EDGE	DECK 13, MID	10:00 A.M. - 1:00 A.M.
VIBE	ENTRANCE DECK 4, FWD	12:00 P.M. - 2:00 A.M.
IT'S A SMALL WORLD NURSERY	DECK 5, MID	9:00 A.M. - 11:00 P.M.

RECREATION

AQUALAB	DECK 12, AFT	9:00 A.M. - 7:00 P.M.
AQUADUCK	DECK 12, MID	9:00 A.M. - 10:00 P.M.
GOOFY'S SPORTS DECK	DECK 12, AFT	8:00 A.M. - 6:00 P.M.
DONALD'S POOL	DECK 11, MID	6:00 A.M. - 11:00 P.M.
GOOFY GOLF	DECK 13, AFT	8:00 A.M. - 10:00 P.M.
GOLF SIMULATORS	DECK 13, AFT	9:00 A.M. - 6:00 P.M.
MIDSHIP DETECTIVE AGENCY	DECKS 2 & 5, MID	9:00 A.M. - 9:00 P.M.
MICKEY'S POOL	DECK 11, MID	6:00 A.M. - 11:00 P.M.
MICKEY'S SLIDE	DECK 11, MID	9:00 A.M. - 6:00 P.M.
NEMO'S REEF	DECK 11, MID	9:00 A.M. - 7:00 P.M.
PORT ADVENTURES DESK	DECK 5, MID	8:30 A.M. - 12:00 P.M. 7:00 P.M. - 8:00 P.M.
QUIET COVE POOL	DECK 11, FWD	6:00 A.M. - 12:00 MID
SENSES FITNESS CENTER	DECK 11, FWD	6:30 A.M. - 10:00 P.M.
SPORTS SIMULATORS	DECK 13, AFT	9:00 A.M. - 6:00 P.M.

GENERAL INFORMATION

ARR-CADE	DECK 11, AFT	24 HOURS
DISNEY VACATION CLUB	DECK 4, MID	5:00 P.M. - 10:00 P.M.
FUTURE CRUISE SALES DESK	DECK 4, MID	8:00 A.M. - 12:00 P.M. 3:00 P.M. - 10:30 P.M.
GUEST SERVICES	DECK 3, MID	24 HOURS
MEDICAL HEALTH CENTER	DECK 1, FWD	9:30 A.M. - 11:00 A.M. 4:30 P.M. - 7:00 P.M.
PORT & SHOPPING DESK	DECK 4, MID	7:30 P.M. - 8:30 P.M.
PRELUDES	DECK 3, FWD	5:45 P.M. - 6:30 P.M. 8:00 P.M. - 8:45 P.M.
SATELLITE FALLS	DECK 13, FWD	6:00 A.M. - 6:30 P.M.
SENSES SPA AND SALON	DECK 11, FWD	8:00 A.M. - 10:00 P.M.
SHUTTERS PHOTO GALLERY	DECK 4, MID	5:00 P.M. - 11:00 P.M.
SHUTTERS DIGITAL	DECK 4, MID	24 HOURS
SHOPPING		
BIBBIDI BOBBIDI BOUTIQUE	DECK 5, MID	9:00 A.M. - 9:00 P.M.
MICKEY'S MAINSAIL	DECK 3, FWD	9:00 A.M. - ARRIVAL 6:30 P.M. - 11:00 P.M.
SEA TREASURES	DECK 3, FWD	9:00 A.M. - ARRIVAL 6:30 P.M. - 11:00 P.M.
VISTA GALLERY	DECK 4, MID	9:00 A.M. - 10:00 P.M.
WHITECAPS	DECK 3, FWD	6:30 P.M. - 11:00 P.M.

DINNER MENU
Animato's Palate: Pacific Rim
Enchanted Garden: Continental Market
Royal Court: French Dinner
Dining Times: 5:45pm & 8:15pm

DRINK OF THE DAY
Yellow Bird (Alcoholic)
Lava Smoothie (Non-Alcoholic)
High: 80°F/27°C

Evening Attire: Cruise Casual

DINING & LOUNGES

BREAKFAST

CABANAS CONTINENTAL	DECK 11, AFT	7:00 A.M. - 7:30 A.M.
CABANAS	DECK 11, AFT	7:30 A.M. - 10:45 A.M.
ENCHANTED GARDEN	DECK 2, MID	9:00 A.M. - 11:15 A.M.
ROYAL COURT	DECK 3, MID	8:00 A.M. - 9:30 A.M.

LUNCH

CABANAS	DECK 11, AFT	12:00 P.M. - 2:15 P.M.
ROYAL COURT	DECK 3, MID	11:30 A.M. - 1:30 P.M.
FULLMORE'S FAVORITES	DECK 11, MID	11:00 A.M. - 6:00 P.M.
LUIGI'S PIZZA	DECK 11, MID	11:00 A.M. - 6:00 P.M.
TOW MATE'S GRILL	DECK 11, MID	11:00 A.M. - 11:00 P.M.

DINNER

ANIMATOR'S PALATE	DECK 3, AFT	5:45 P.M. & 8:15 P.M.
ENCHANTED GARDEN	DECK 2, MID	5:45 P.M. & 8:15 P.M.
ROYAL COURT	DECK 3, MID	5:45 P.M. & 8:15 P.M.
CABANAS CASUAL DINING	DECK 11, AFT	6:30 P.M. - 8:30 P.M.

LATE NIGHT SNACKS

LUIGI'S PIZZA	DECK 11, MID	9:30 P.M. - 12:30 A.M.
LA PLAZZA (18+)	DECK 4, AFT	10:45 P.M. - 11:45 P.M.

ADDED FEATURES

BEVERAGE STATION	DECK 11, Mid	24 HOURS
EYE SCREAM	DECK 11, Mid	11:00 A.M. - 11:00 P.M.
ROOM SERVICE	DIAL O	24 HOURS

ENTERTAINMENT - LOUNGES - BARRY

Adults must be 21 and older to consume alcoholic beverages.

BON VOYAGE	DECK 3, MID	11:00 A.M. - 11:00 P.M.
COVE CAFE (18+)	DECK 11, FWD	7:00 A.M. - 12:00 MID.
COVE BAR (18+)	DECK 11, FWD	10:30 A.M. - 10:30 P.M.
CURRENTS (18+)	DECK 13, FWD	10:00 A.M. - 11:00 P.M.
D LOUNGE	DECK 4, MID	SHOW TIMES
FROZONE	DECK 11, MID	11:00 A.M. - 11:00 P.M.
LA PLAZZA	DECK 4, AFT	4:00 P.M. - 12:30 A.M.
MERIDIAN (18+)	DECK 12, AFT	5:00 P.M. - 12:30 A.M.
O'GILLIS PUB	DECK 4, AFT	3:00 P.M. - 12:30 A.M.
OUTLOOK	DECK 14, MID	SUNSET
OOH LA LA (18+)	DECK 4, AFT	5:00 P.M. - 1:00 A.M.
SKYLINE (18+)	DECK 4, AFT	4:30 P.M. - 1:00 A.M.
THE TUBE (18+)	DECK 4, AFT	10:00 P.M. - 2:00 A.M.
WAVES	DECK 12, AFT	10:00 A.M. - 6:30 P.M.
VISTA CAFE	DECK 4, MID	7:30 A.M. - 10:00 P.M.

Consumers who order raw or partially cooked, ready-to-eat food of animal origin, are hereby informed that the food is not sufficiently cooked to ensure its safety.



IMPORTANT INFORMATION

Please check your tour tickets for meeting times and locations. Visit the Port Adventures Desk, Deck 5, Midship for any questions.

First Tender: Approx 10:30 a.m. Please refer to your Tendering Letter.
Last Tender: 4:00 p.m.

Ship's Agent in Grand Cayman

Bodden Shipping Agency, Fifth Floor,
Room 508, Goring Avenue,
GT Grand Cayman,
Tel. 345-949-6254 or 345-949-7424


IMPORTANT NUMBERS

Fire/Security: 7-3001
Medical/Emergency: 7-3000
Health Center: 7-1923

PERF/W003/12/PD/DS/NE

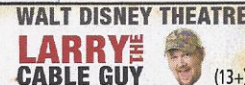


	8:30	8:45	9:00	9:15	9:30	9:45	10:00	10:15	10:30	10:45	11:00	11:15	11:30	11:45	12:00	12:15	12:30	12:45	1:00	1:15	1:30	
FUNNELVISION	Lilo & Stitch (PG) FunnelVision				Hercules (G) FunnelVision				College Road Trip (G) FunnelVision													
MOVIES																						
CHARACTER					Mickey Lobby Atrium	Minnie Lobby Atrium	Donald Lobby Atrium	Daisy Lobby Atrium	Chip & Dale Lobby Atrium													
FUN FOR ALL AGES					Disney Trivia La Piazza																	
					Shopping Highlights D Lounge																	
					Wii Challenge O'Gills Pub																	
ADULTS					Group Cycling Senses Fitness Center																	
ADULTS	Friends of Bill W. Outlook																					
Vibe																	Hangin in Vibe					
Edge	Open House				Mario Kart Challenge																	
Oceaneer Lab					Detective School								POTC: Tides of Fortune				Youth Lunch					
Oceaneer Club					Little Einsteins								Puzzle Playtime				Magic Playfloor					
Out & About	Open House in Edge																					

Symbol for activities that will be repeated during the cruise

	1:45	2:00	2:15	2:30	2:45	3:00	3:15	3:30	3:45	4:00	4:15	4:30	4:45	5:00	5:15	5:30	5:45	6:00	6:15	6:30	6:45	
FUNNELVISION	The Emperor's New Groove (G) FunnelVision				Disney Channel on Deck FunnelVision				Remember the Titans (PG) FunnelVision													
MOVIES	War Horse (PG-13) Buena Vista Theatre								The Muppets (PG) Buena Vista Theatre				>7:28 p.m.									
CHARACTER									Pinocchio Lobby Atrium	Peter Pan Dk 4, Midship	Tinker Bell Lobby Atrium	Capt. Hook Dk 4, Midship										
FUN FOR ALL AGES	Chip It Golf (12+) Lobby Atrium				Disney Animation: Cartoon Physics D Lounge				Disney Channel on Deck Deck Stage				Live Music with "The Dreamers" Lobby Atrium									
									Live Music with Rob Thompson Deck 12, Forward				Disney Karaoke D Lounge									
ADULTS									Club 18*21 Dive into Dj'ing The Tube													
ADULTS	Scrabble Tournament O'Gills Pub								Pub Quiz O'Gills Pub													
Vibe	Foosball								Disney Animation- Creating a Character				Zombified									
Edge	ESPN Dream Team Draft Day				Movie Matinee				A-Z Scavenger Hunt													
Oceaneer Lab	Super Sloppy Science - Volcanoes				Animation Cells								Youth Dinner				Detective School					
Oceaneer Club					Once Upon a Time												Journey to Neverland					
Out & About	Shuffleboard																					

FOLD

Fold along the dotted lines and take me with you so you don't miss any of the fun!

	7:00	7:15	7:30	7:45	8:00	8:15	8:30	8:45	9:00	9:15	9:30	9:45	10:00	10:15	10:30	10:45	11:00	11:15	11:30	11:45	12:00	
FUNNELVISION					NCAA Finals - Kentucky vs. Kansas FunnelVision (Subject to Satellite Availability)																	
MOVIES					The Muppets (PG) Buena Vista Theatre				The Help (PG-13) Buena Vista Theatre				>12:56 a.m.									
CHARACTER	Capt. Hook Dk 4, Midship	Pinocchio Preludes	Tinker Bell Lobby Atrium	Snow White Lobby Atrium	Lilo & Stitch Preludes	Snow White Dk 4, Midship	Goofy & Max Lobby Atrium	Pinocchio Dk 4, Midship	Aladdin Lobby Atrium													
FUN FOR ALL AGES	Live Piano Lobby Atrium	Paul Boland The Tube					Live Piano Lobby Atrium		Disney Karaoke D Lounge													
	Bingo Pre Sales	MEGA Raffle Jackpot BINGO D Lounge					Disney Karaoke D Lounge	Live Music with "The Dreamers" Lobby Atrium	Live Piano Lobby Atrium													
ADULTS					NCAA Finals - Kentucky vs. Kansas O'Gills Pub (Subject to Satellite Availability)				Buckets N Boards The Tube				Viva Europa with Guest DJ Z The Tube									
ADULTS									Viva Europa Europa				Live Music with Fine Whines La Piazza									
Vibe	Zombified				Smoothie Hour				Pump It Up - till 11:00 p.m.				ESPN Monday Night Football Call It!				Gender Wars					
Edge	Anyone Can Cook								Gender Wars				Gaga Ball				>12:15am Invade Club					
Oceaneer Lab	Magic Show												Gaga Ball				Magic Playfloor					
Oceaneer Club					Super Sloppy Science - Flubber												Movie Time					
Out & About	A-Z Scavenger Hunt - Meet at Eye Scream																					

FOLD

IN THE SPOTLIGHT SERIES

JUMP UP! SERIES

CLUBHOUSE SERIES

STORYBOOK SERIES